

# Ultra-reliable MECHANICAL TENSION METERS

## DX2 Series

10 ranges, 5–50 g to 5–20 Kg

A precise jeweled movement, choice of ball bearing mounted rollers and rugged cast aluminum housing makes the DX2 ideal for the toughest production floor application.

Built-in mounting holes permit fixed installation for continuous in-line use.



## FEATURES

- Thumb-operated, roller-shifting mechanism and exclusive snare-guide automatically guides the moving filament into the V-grooves eliminating breaks and snags.
- Front filament loading permits the operator to observe running material, rollers and dial face at all times.
- DX2's are individually calibrated for highest accuracy.
- DX2's hard-coated aluminum, V-grooved rollers are rated for speeds up to 2000 m/min or, optionally, up to 5000 m/min.
- Built-in material thickness compensator maximizes accuracy when using filaments of different diameters.\*
- NIST calibration available.



Model DXL-5K with 250 mm spacing between outer rollers.

Model Prefix	DX2										DXX	
Range Code	5	12	20	40	SP	EX	200	500	1K	2K	3K	5K
Tensions (g)	5–50	10–120	10–200	10–400	20–1000	100–1000	200–2000	400–5000	2–10 Kg	5–20 Kg	5–30 Kg	5–50 Kg

Complete model number includes: DX2 plus range code, e.g., DX2-200.

\* Supplied on DX2-SP models and higher ranges.

# DX2 Series

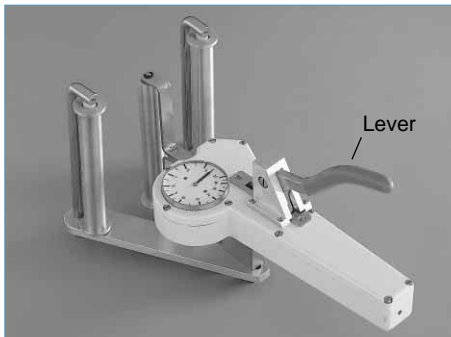
## Options

### Air Damping (A)



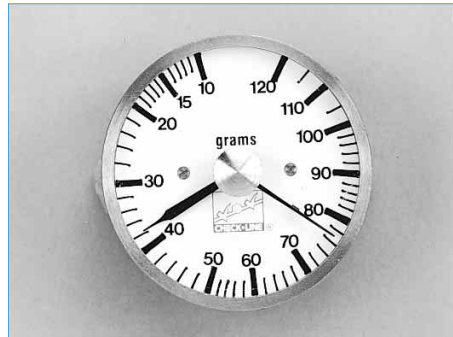
An adjustable, precision air dashpot provides steady tension readings as tensions fluctuate.

### Lever (L)



A heavy-duty, lever-operated mechanism moves the outer rollers for easy acquisition of the running filament. Recommended for models of 10 Kg or higher.

### Memory Pointer (M)



Designed to retain the peak tension value as tensions fluctuate. Manually reset by using the knob located in the center of the dial.

### High Speed Bearings (K)



Rated for speeds up to 3500 m/min.

### Ultra High Speed Roller Assembly (HS)



Rated for speeds up to 5000 m/min.

## Model Data & Specifications

<b>Accuracy*</b>	±1% of full scale or ±1 graduation mark on scale	<b>Roller Material (standard)</b>	Hard-coated aluminum
<b>Diameter of Scale</b>	41 mm	<b>" " (optional)</b>	Hardened steel (ST) Chromed Steel (W) Ceramic (CE) Plastic (PL)
<b>Maximum Speed (standard)</b>	2000 m/min	<b>Housing material</b>	Die-cast aluminum
<b>" " (optional)</b>	3500 m/min (K)	<b>Dimensions</b>	225 x 90 x 44 mm (8.6" x 3.5" x 1.7")
<b>" " "</b>	5000 m/min (HS)	<b>Weight</b>	500 g (1.1 lbs.), approx.
<b>Outer roller distance, c:c</b>			
<b>DX2-5 to DX2-EX</b>	38 mm		
<b>DX2-200 to DX2-1K</b>	100 mm		
<b>DX2-2K</b>	150 mm		
<b>DXX-3K to DXX-5K</b>	250 mm		

\* Using factory material standards and procedures. Special calibration using customer sample is available.

Specifications subject to change without notice.

# ELECTROMATIC

EQUIPMENT CO., INC.

600 Oakland Ave., Cedarhurst, NY 11516-U.S.A.  
TEL 516-295-4300 • FAX 516-295-4399

For additional information  
or to place an order  
**CALL TOLL FREE**  
**1-800-645-4330**

CHECK•LINE is a registered trademark of ELECTROMATIC Equipment Company Inc.

Printed in U.S.A.